



Operation guide of YOGI CARE UCOLOR CREAM





YOGI CARE UCOLOR CREAM

Ingredient:

- Selected micromolecular pigments for lower Armonia and gentler hair coloring
- Does not contain paraben
- Paste based on natural ingredients
- Derived from lanolin, extracted from lanolin
- Rich in natural coconut oil
- Enriched with food-grade vitamin c for better care of hair
- The rich ester ingredients care for the hair, and give the paste better adhesion, easier to mix and apply, without dripping;



YOGI CARE OXIDANT DEVELOPER

9%
30 VOL

3%
10 VOL

6%
20 VOL

12%
40 VOL



2. Developer Cream Usage Guide

LIFTING LEVELS	MIXING PROPORTION	DEVELOPER	PROCESSING TIME
- Tone on tone - No lifting	1:1	10 Vol. (3%)	30 mins.
1 Tone	1:1	20 Vol. (6%)	30-40 mins.
2 Tones	1:1	30 Vol. (9%)	30-40 mins.
3 Tones	1:1	40 Vol. (12%)	45-50 mins.
- 4 Tones - For extra lift	1:1	40 Vol. (12%)	45-50 mins.





80ml Color Cream

+



80ml Developer 1:1

Developer	Usage
6%(20 vol)	Grey hair covering Darkening Toning 1 Level lifting
9%(30 vol)	2 levels lifting
12%(40 vol)	3-4 levels lifting

FASHION COLOR LIGHTENING



40ml color cream

+



80ml Developer 1:2

Developer	Usage
9%(30 vol)	3-4 levels lifting
12%(40 vol)	4-5 levels lifting

HAIR LIGHTENER DUST FREE INSTRUCTION

Yogi care hair lightener contain a formula which minimizing the risk of irritation .It not only delivers superior consistency and lightening effect,but also reduces the damage to the hair.

Directions:

Mix Yogi care hair lightener with YOGI care developer at the weight ratio of 1:2.

Mix the paste evenly and apply it to the hair needed,observe the lift (color)carefully.

Rinse when the desired result is achieved.





We have more than 52 colors for your option





YOGI CARE UCOLOR HAIR CREAM OPERATION GUIDE

- Base Color

2/0-3/0-4/0-5/0-6/0-7/0-8/0-9/0

10/0-11/0-12/0

2/0 (1: 1) + 6% = covering white hair (keep for 45 minutes)

3 / 0-4 / 0-5 / 0-6 / 0-7 / 0-8 / 0-9 / 0-10 / 0-11 / 0-12 / 0

Base on these colors,when dye other target colors ,

this method is as below

For example 6/46 + 6/0 = 90g + 10 g (for 5-9 degrees color)



0/00 Hair Color Cream Operation Method

10/00 lightening and fading (fading natural color 2 to 3 degrees)

Brightening ratio : Lightening: target color 7/3, no 7/3, only 6/3

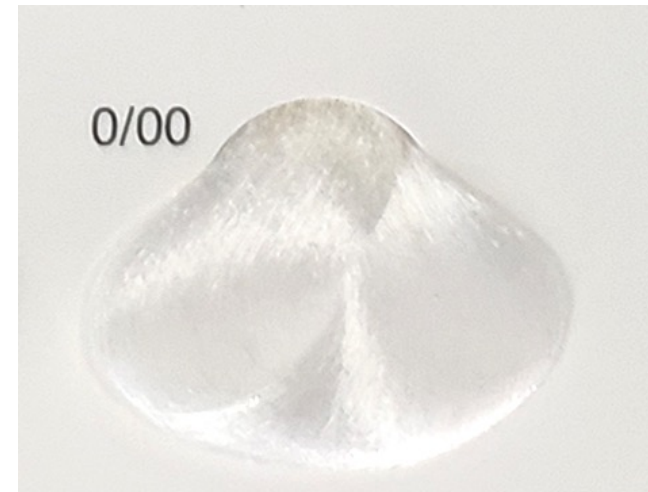
"6/3 + 0/00 + 6%" ratio of 3: 1: 4

Example: Fading · Washing:

00/00 + Developer (replace bleaching powder)

Note: 0/00 + Developer cannot replace powder bleaching

Example: Brightening: 5/3 + 0/00 + 0/33 + 9% = 5/33





0/28 Hair Color Cream Operation Method

- 0/28 Cyan
- Used to hedge the orange color of the hair to make the target color more pure





0/11 Hair Color Cream Operation Method

Used to hedge the orange color of the hair to make the target color more pure, for example: the hair was originally made / 4 or 4/3 color, now when you want to make a light brown or linen color, in the target color add a proper amount of 0/11 can be used to make the original color, otherwise it will be orange. Become Cold Brown or Linen add 0/11 to remove Orange





5/11 Hair Color Cream Operation Method

5/11 5 degrees grey
Hair base color: 3-5 degrees
Hair Color Cream 5/11 + 6% (9%) 1: 1
Keep stay for 45 minutes





7/11 Hair Color Cream Operation Method

7 degrees gray

Hair base color 3-5 degrees

Hair Color cream 7/11 + 9% (12%) 1: 1.5 or (1: 2)

Park for 45 minutes





8/11 Hair Color Cream Operation Method

8/11

8 degrees grey color

Hair base color is 8 degrees and a half or more and 9 degrees

Hair Color cream 8/11 + 3% (6%) Hair Oxidant Developer

Apply for 30 minutes





5/77 Hair Color Cream Operation Method

5/77

5 degrees brown color

Hair base color 3-5 degrees

Hair Color cream 5/77 + 6% Oxidant developer= 1: 1

Apply for 45 minutes





7/77 Hair Color Cream Operation Method

7/77

7 degree brown

Hair base color 3-5 degrees

Hair Color cream 7/77 + 9% (12%) Hair Oxidant Developer = 1: 1

Apply for 45 minutes





9/77 Hair Color Cream Operation Method

9/77

9 degrees brown

Hair base color 8:30 degree or more

Color Cream 9/77 + 3% (6%) Oxidant developer= 1: 1

Apply for 30 minutes





6/12 Hair Color Cream Operation Method

6/12 = 6 degrees stuffy cyan

Hair background: 3-5 degrees

Hair Color Cream 6/12 + 9% (12%) Oxidant Developer = 1: 1

Process for 45 minutes





8/12 Hair Color Cream Operation Method

8/12 = 6 degrees light linen gray

Hair background: 8-10 degrees

Hair Color Cream 8/12 + 3% (6%) Oxidant Developer = 1: 1

Process for 45 minutes





0/33 Hair Color Cream Operation Method

0/33Lemon yellow

How to use: It is used to remove the purple tone of hair and make the target color more pure.

Example: Hair was originally made color with / 66 or / 8 . Now, when you want to make a bright warm color, add an appropriate amount of 0/33 to the target color to achieve a pure target color. (Note; but the blue-purple hair (When it is thicker, the target color will be darker)





5/33 Hair Color Cream Operation Method

5/33 light brown gold

Hair base color: 3-5 degrees

5/33 color cream + 6% (9%) oxidant developer = 1: 1

Park for 45 minutes

Cover grey hair

5/33 color cream + 6% (9%) oxidant developer = 80 +
20 + 100

Park for 45 minutes





7/33 Hair Color Cream Operation Method

7/33 dark golden yellow

Hair base color: 3-5 degrees

7/33 color cream+ 0/33 + 9% (12%)

developer= 80 + 20 = 1: 1

Park for 45 minutes

Cover grey hair

7/33color cream + 7/0 + 9% developer= 70

+ 30 + 100

Park for 45 minutes





9/33 Hair Color Cream Operation Method

9/33 dark golden yellow

Hair base color: 8-10 degrees

9/33color cream + 3% (6%)developer = 1: 1

Park for 45 minutes





12/2 Hair Color Cream Operation Method

12/2 super light stuffy cyan
Hair base color 9-12 degrees
12/2 color cream + 3% (6%) developer = 1: 1

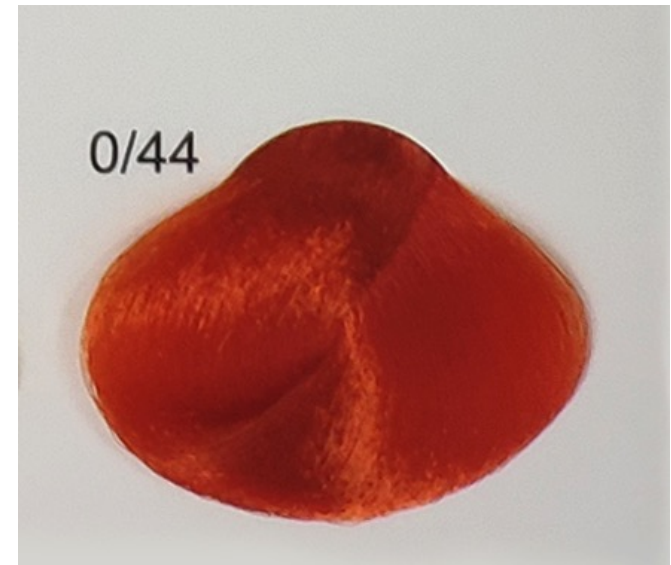




0/44 Hair Color Cream Operation Method

0/44 Copper color

How to use: It is used to remove the blue hair and make the target color more pure.





0/44 Hair Color Cream Operation Method

4/44 deep red

Hair base color: 3-5 degrees

4/44 color cream+ 6% (9%) developer= 1: 1

Park for 45 minutes

Cover grey hair

4/44color cream + 4/0 color cream+ 6% (9%) developer= 80 + 20 + 100

Park for 45 minutes





6/44 Hair Color Cream Operation Method

6/44 Bright red

Hair background: 3-5 degrees

6/44 + 6% (9%) = 1: 1

Park for 45 minutes

Cover gray hair

6/44 + 6/0 + 6% (9%) = 80 + 20 + 100

Park for 45 minutes



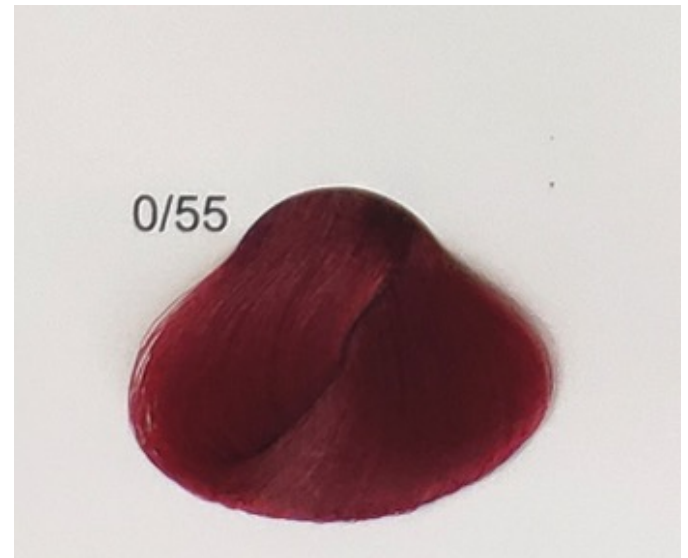


0/55 Hair Color Cream Operation Method

How to use:

It is used to remove the green in the hair.

Add an appropriate amount of 0/55 to make the target color more pure.





6/55 Hair Color Cream Operation Method

6/55 dark gold red brown

Hair base color: 3-5 degree

$6/55 + 6\% (9\%) = 1: 1$

Park for 45 minutes

Cover grey hair

$6/55 + 6/0 + 6\% (9\%) = 80 + 20 + 100$

Park for 45 minutes





8/55 Hair Color Cream Operation Method

8/55 light gold red brown

Hair base color 3-5 degrees

8/55 + 9% (12%) = 1: 1

Park for 45 minutes

Operate above 8 degrees after dyeing

8/55 + 3% (6%)

1: 1 natural parking for 45 minutes





0/66 Hair Color Cream Operation Method

0/66 Violet

How to use:

It is used to remove the yellow and orange.





3/66 Hair Color Cream Operation Method

3/66 light brown purple

Hair base color: 3-5 degrees

3/66 + 9% = 1: 1

Park for 45 minutes

Cover gray hair

3/66 + 6% (9%) = 100: 100

Park for 45 minutes





66/44 Hair Color Cream Operation Method

66/44 brilliant red
Fully covered grey hair
Hair background: 3-5 degrees
 $66/44 + 6\% (9\%) = 1:1$
Park for 45 minutes





7/665 Hair Color Cream Operation Method

7/665 Dark Fuchsia
Fully covered grey hair
Hair base color 3-5 degrees
7/665 + 6% (9%) = 1: 1
Park for 45 minutes





5/77 Hair Color Cream Operation Method

5/77 light brown

Hair base color: 3-5 degrees

5/77 + 9% = 1: 1

Park for 45 minutes

Cover grey hair

5/77 + 5/0 + 6% (9%) = 80 + 20 + 100

Park for 45 minutes





7/77 Hair Color Cream Operation Method

7/77 linen Mocha

Hair base color 3-5 degrees

7/77 + 9% (12%) = 1: 1

Park for 45 minutes

Cover grey hair

7/77 + 7/0 + 9% = 80 + 20 + 100

Park for 45 minutes





9/77 Hair Color Cream Operation Method

9/77 rhyme brown
Hair base color: 8: degrees
 $9/77 + 6\% (9\%) = 1: 1$
Park for 45 minutes





6/45 Hair Color Cream Operation Method

6/45 Red

Hair base color: 3-5 degrees

6/45 + 9% = 1: 1

Park for 45 minutes

6 degrees red

Cover grey hair

6/45 + 6/0 + 6% (9%) = 80 + 20 + 100

Heat for 15 minutes and leave for 45 minutes





8/45 Hair Color Cream Operation Method

8/45 Red

Hair base color 3-5 degrees

8/45 + 9% (12%) = 1: 1

Park for 45 minutes

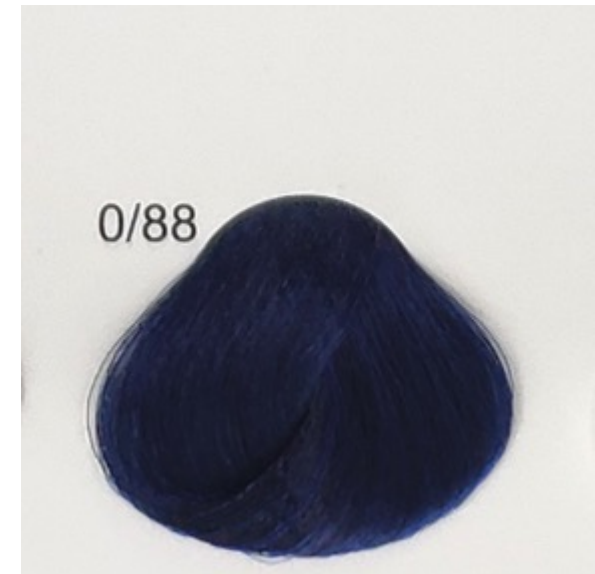




0/88 Hair Color Cream Operation Method

How to use:

Used to remove the yellow tone of hair and make the target color more pure. For example, the hair was originally made with the color of / 33. Now when you want to make red, add an appropriate amount of 0/88 to the target color to achieve a bright red without turning orange (note: add dyeing cream 0/88 When too much, the target color will be darkened) Doing red color plus 0/88 can remove yellow





Dazzling brown series dyeing operation method

5N light brown

5R light brown red purple 7M linen mocha

Hair base color:

3-5 degrees Target color + 6% (9%) = 1: 1

Park for 45 minutes

Cover grey hair

5N (R) + 5/0 + 6% (9%) = 80 + 20 + 100

Park for 45 minutes





7/16 Hair Color Cream Operation Method

7/16 medium purple grey

Hair base color: 8:30

7/16 + 3% (6%) = 1: 1

Park for 45 minutes

7/16 medium purple grey





9/171 Hair Color Cream Operation Method

9/171 brown grey

Hair base color: 8:30

9/171 + 3% (6%) = 1: 1

Park for 45 minutes

9/171 brown grey





9/655 Hair Color Cream Operation Method

9/655 Shine bright red

Hair base color 8: 30 + 3% (6%) = 1: 1





9/182 Hair Color Cream Operation Method

9/182 Green Grey Color

Hair background 8: 30 + 3% (6%) = 1: 1





9/28 Hair Color Cream Operation Method

9/28 green gray

Method 1: 9/28 Remove Red

Method 2: If you need to dye brown, you can add a small amount of 9/28, and the brown will be more pure.

Method 3: hair base color 8 and a half

9/28 + 3% (6%) = 1: 1 green-gray effect

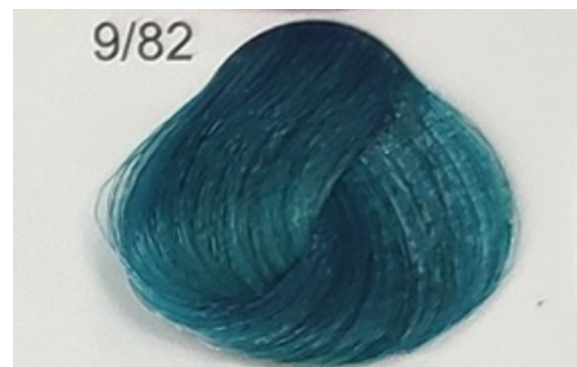




9/82 Hair Color Cream Operation Method

9/82 Peacock Blue Grey

Base color 8: 30 + 3% (6%) = 1: 1





9/33E Hair Color Cream Operation Method

9 / 33E (Lemon Yellow)

Method 1: It can be added to the ordinary yellow dyeing paste for use.

Method 2: Make the hair base color with excellent collection bleaching powder + 6% oxidant developer (1: 1.5) 1-2 times to about 8 and a half degrees.

9 / 33E + 3% (6%) (1: 1) for natural parking (45 minutes)

